

ARC-8050T2

(8-bays Thunderbolt™ 2 to 6Gb/s SAS RAID Storage)



Step 1: Unpack the ARC-8050T2 Unit

Inspect ARC-8050T2 enclosure. If it appears damaged, or if any items of the contents listed below are missing or damaged, please contact your dealer or distributor.

Checklist

- 1 x ARC-8050T2 8-bays RAID storage unit
- 1 x Power cord
- 1 x RJ-45 LAN cable
- 32 x drive mounting screws (4 per drive tray)
- 1 x ARC-8050T2 quick installation guide
- 1 x Installation CD – containing driver, relative software and manual

Step 2: Install SAS/SATA Drives

Secure the drive to the tray by four of the mounting screws.

Step 3: Slide the Drives into Enclosure

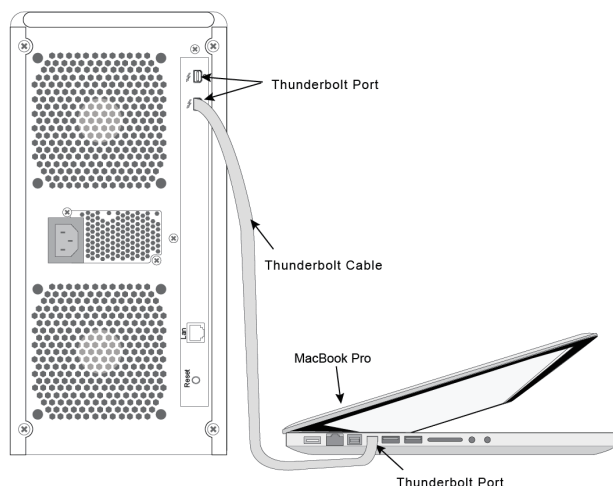
After all drives are in the drive tray, slide all of them back into the ARC-8050T2 RAID storage and make sure you latch the drive trays.

Step 4: Connect Thunderbolt Cable to Host Computer

There are two Thunderbolt ports on the rear of ARC-8050T2 series RAID storage for connecting the array to Thunderbolt host and next Thunderbolt devices.

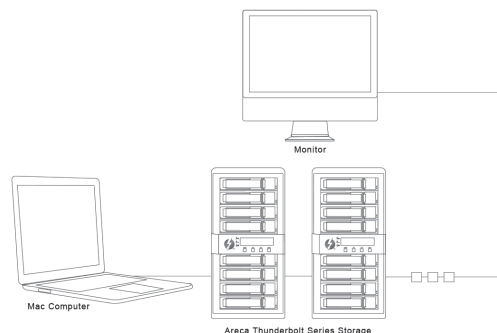
Host Port Connection

Connect ARC-8050T2 RAID storage and Thunderbolt technology capable computer port as shown below:



Daisy Chain Typologies

Connect the cable to one of the interface ports on the back of your ARC-8050T2 RAID storage and to your Thunderbolt capable computer. The additional port may be used to daisy chain compatible computer peripherals, such as hard drives, monitors, and much more. A single Thunderbolt port supports hubs as well as a daisy chain of up to seven Thunderbolt devices on, including the Thunderbolt capable computer.



Step 5: Connect Monitor Port - LAN Port (Optional)

User can remote manage the RAID enclosure without adding any user specific software (platform independent) via standard web browsers directly connected to the 10/100Mbit RJ45 LAN port. Connect LAN port of the ARC-8050T2 using the included Ethernet cable and then to a LAN port or LAN switch.

Step 6: Connect Power Cord

1. Connect power cord to a grounded electrical outlet and to the ARC-8050T2 RAID storage.
2. ARC-8050T2 RAID storage will automatically turn on when host computer power on status is received from the thunderbolt cable. It takes about 30 seconds to fully start up the RAID storage.
3. ARC-8050T2 RAID storage automatically turns off when the computer to which it is attached sleeps or is disconnected.

Step 7: Install the MRAID Software Package

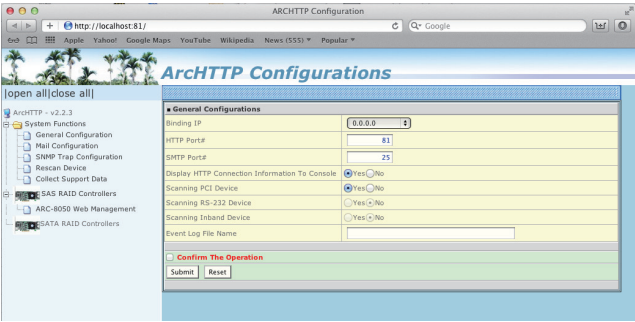
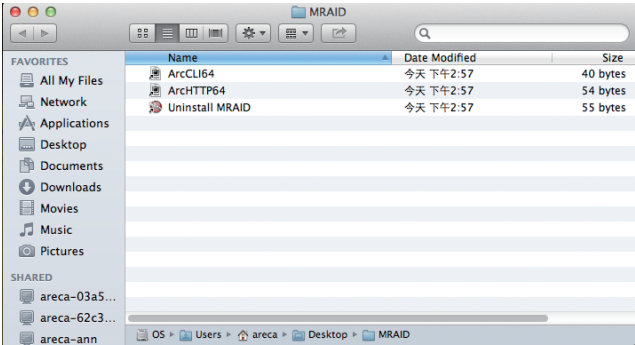
1. Download the install_mraid installer from the website at "http://www.areca.com.tw/support/s_thunderbolt/thunderbolt_mac.htm" (**Mac Users**) or "http://www.areca.com.tw/support/s_thunderbolt/thunderbolt_win.htm" (**Windows Users**).
2. Double-click on the install_mraid zipped file.
3. Double-click on the install_mraid icon on the Finder or the "setup.exe" unzip file.
4. Follow the installer on-screen steps to complete the installation.

Step 8: Configure RAID Volumes

Your ARC-8050T2 series can be configured by McRAID Storage Manager from ArchHTTP (Thunderbolt port), McRAID Storage Manager Through LAN port or LCD Panel with Keypad.

Method 1: McRAID Storage Manager From ArchHTTP

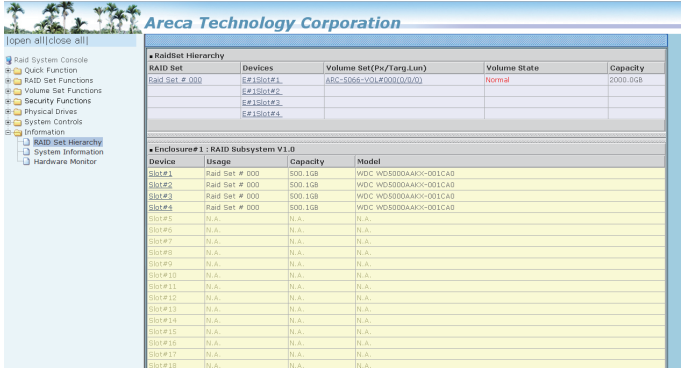
- 1. MAC USERS:
There is one "MRAID" icon showing on your desktop. Double-click on the "MRAID" icon to locate your ArchHTTP utility and CLI program file folder.
- WINDOWS USERS:
Right-click on the "Start" menu and choose "Programs". Double-click on the "MRAID" program icon to start the ArchHTTP utility (From the Start menu, choose Programs > MRAID > ArchHTTP).
- 2. When you double-click on the "ArchHTTP64", it shows all RAID storages available on the system and create an individual RAID storage icon located on left column of the "ArchHTTP Configurations" screen.



- 3. Locate "ARC-8050T2 Web Management" and launch the selected McRAID storage manager.



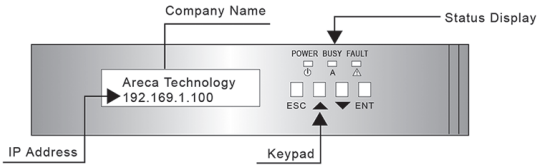
Enter RAID storage default User Name "admin" and the Password "0000" when the login page prompted for it. After logging in, the McRAID storage manager process starts.



Click on the "Quick Create" in the main menu, your volume is automatically configured based on the number of disks in your system. You can create a RAID set associated with exactly one volume set. The user can change the RAID Level, Capacity, Initialization Mode, and Stripe Size. A hot spare option is also created, depending on the exist configuration. Tick on the "Confirm The Operation" check box and click on the "Submit" button, the RAID set and volume set will start to initialize. If you prefer to customize your volume set, please use the "Raid Set Functions" and "Volume Set Functions". See chapter 4 of ARC-8050T2 user manual for information on customizing your RAID volumes using McRAID storage manager. Otherwise, to begin using the ARC-8050T2 right away.

Method 2: LCD Panel with Keypad (Optional)

You can use LCD front panel and keypad function to simply create the RAID volume. The LCD status panel also informs you of the disk array's current operating status at a glance. The LCD provides a system of screens with areas for information, status indication, or menus. The manufacture default password is set to 0000. The initial screen is as following:



For additional information on using the LCD to configure the RAID subsystem see the LCD manual. You can download it from the website below:

http://www.areca.us/support/download/RaidCards/Documents/Manual_Spec/LCD_manual.zip

Method 3: McRAID Manager From LAN Port (Optional)

User can remote manage the ARC-8050T2 series without adding any user specific software (platform independent) via standard web browsers directly connected to the Gigabit Ethernet RJ45 LAN port. The IP address default shows in the LCD screen. Launch the Web Browser-based RAID manager by entering `http://[IP Address]` in the web browser.

Type the User Name and Password. The RAID controller default User Name is "admin" and the Password is "0000". After entering the user name and password, click the button to access the McRAID storage manager.

See the chapter 4 of Web Browser-based Configuration on the user manual detailing the McRAID Storage Manager to customize your RAID configuration.

If you need more detail information, please download ARC-8050T2 manual from the website below:

- https://www.areca.com.tw/products/thunderbolt_8050T2.html
- <https://www.areca.com.tw/support/downloads.html>

areca® At the Heart of Storage

TEL:886-2-87974060 FAX: 886-2-87975970

Technical Support: support@areca.com.tw

Sales Information: sales@areca.com.tw

